

INSTALLATION GUIDE

01922 492777

HELLO@PLASCLAD.CO.UK

WWW.PLASCLAD.CO.UK

UNITS 5 & 6
WILLENHALL LANE INDUSTRIAL ESTATE
BLOXWICH WALSALL WS3 2XN

PLAS
CLAD

Content

Preparation	3
Realisation	4
Processing indications	5
Cleaning	6
Substrate	7
Substrate preparation	8
Adhesive mixing and applications	9 – 10
Application and adjustment of the sheet, pushing and rubbing with pressure roller	11 – 12
Expansion joint	13
Inner and outer corners	14
Cutting with a jigsaw and smoothening of the edges with a countersink tool	15

Installation of TroBloc® and Trovidur® EC-Clad wall cladding elements

For the adhesion of wall cladding elements it is recommended to use a suitable two-part PUR adhesive. It is also possible to use one-part PU systems, but it has to be taken into consideration that those systems need a certain amount of moisture for the curing process which might not be given on very dry substrates.

Please follow the recommendations provided by the adhesive manufacturer. For the adhesion of wall cladding elements it is recommended to use a suitable two-part PUR adhesive. It is also possible to use one-part PU systems, but it has to be taken into consideration that those systems need a certain amount of moisture for the curing process which might not be given on very dry substrates.

Please follow the recommendations provided by the adhesive manufacturer.

01922 492777
HELLO@PLASCLAD.CO.UK
WWW.PLASCLAD.CO.UK

UNITS 5 & 6
WILLENHALL LANE INDUSTRIAL ESTATE
BLOXWICH WALSALL WS3 2XN

PLAS
CLAD

Preparation

The wall construction and especially the wall surface must be dry, free of dust and grease, and sustainable. The consistency of paints, coatings etc. is elementary for the strength of the adhered elements. If the substrate is not sound and resilient, old paints and coatings have to be removed first. To ensure the bonding on the different substrates, preliminary tests are recommended. Also, a primer system can increase the strength of the bond. Initially, the sheets can be glued very well, but due to the production process, traces of lubricants may remain on the surface. Therefore, a pre-cleaning, e.g. with isopropyl alcohol, is recommended in order to achieve an optimal bonding result. Please make sure that the installation is done at room temperature. Prior to installation, all materials must be conditioned in the room for at least 24 hours, possibly longer in winter, especially if the sheets are stored in a stack.

Realisation

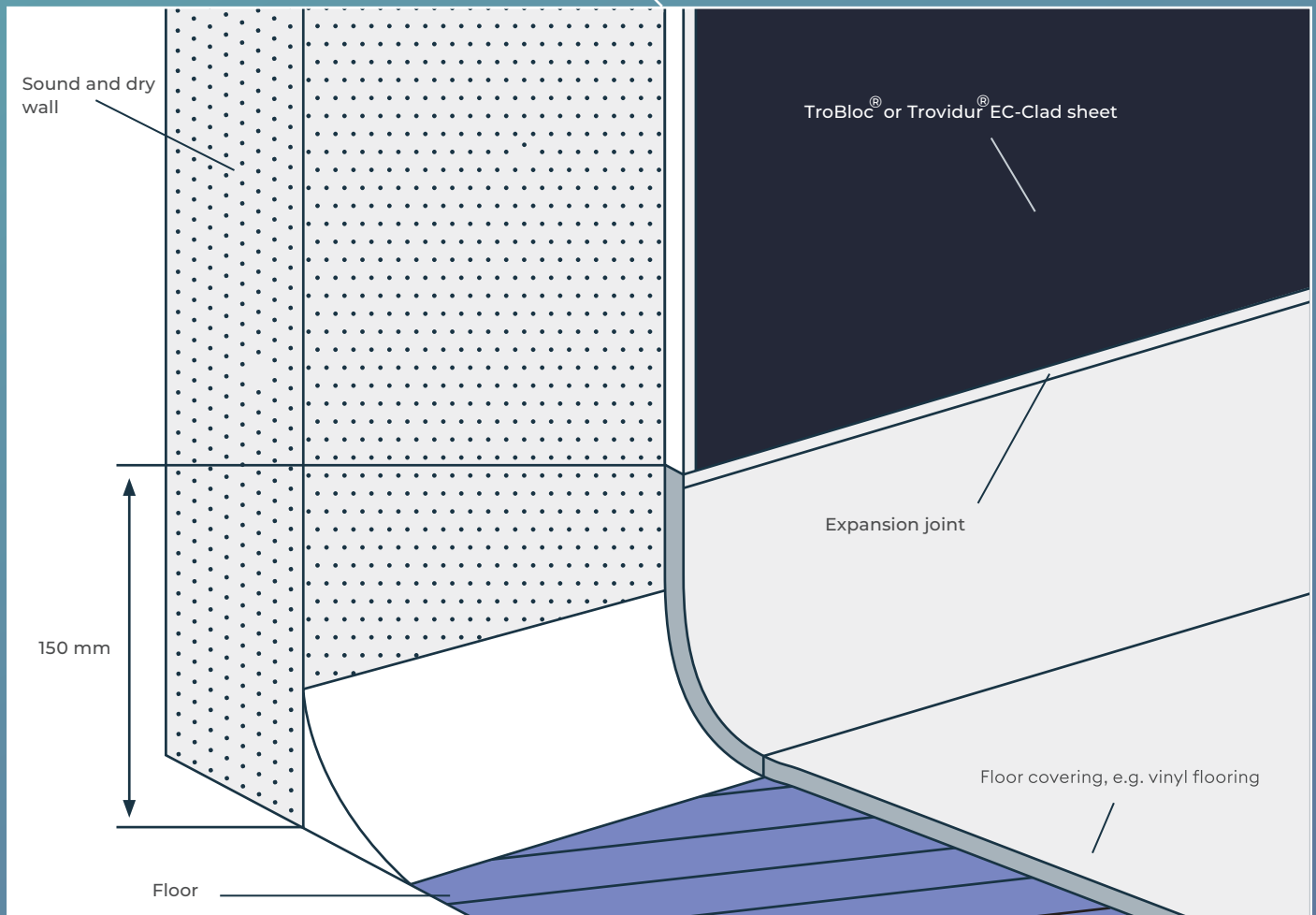
For a controlled adhesion and to support the curing process of the glue, a double-sided adhesive tape can be used. The tape ensures a good tack right from the beginning. Apply it lengthwise on the reverse side of the elements, close to the border. The distance of the fixing films should be ≤ 500 mm. The adhesive is then applied evenly and over the entire surface with a notched trowel (B2 or B3, depending on the roughness of the wall surface) on the reverse side of the TroBloc® or Trovidur® EC-Clad elements. In the next step, the protective film of the double-sided adhesive tape is removed. Then, the sheets are attached to the wall. After the alignment, an initial adhesion is established by pressing and rubbing in the region of the adhesive tape. Subsequently, the movements are extended to the entire surface to ensure uniform wetting with the adhesive. Between two sheets, an expansion joint of 2–5 mm (depending on the expected temperature range within the room) must be taken into account. Immediately after installation, the functional stability is given. The final strength of the bonded cladding sheets is reached on the following day.

Expansion joints can be closed with sealant, 1- or 2-part profile

Processing indications

Bonding of aluminium: on chemically pre-treated or lacquered surfaces only. Blank aluminium cannot be glued in a permanent and ageing resistant way without pre-treatment of the adherend. Especially the bonding of materials with different thermal expansion coefficients has to be evaluated in consideration of their long-term stability, which can be affected by changing ambient temperatures. Protective films have to be removed immediately after installation.

Connection to flooring



Cleaning

Leaked adhesive must be removed immediately with a suitable cleaner while it is not hardened. Cleaning of hardened adhesive is usually only mechanically possible, which can damage the surface. It has to be ensured that no adhesive film remains on the surface, since it can discolour under the influence of UV radiation.

For maintenance cleaning we recommend warm water with a small amount of neutral soap and a soft cloth. Abrasive cleaning methods and solvents are not allowed!



Installation guide

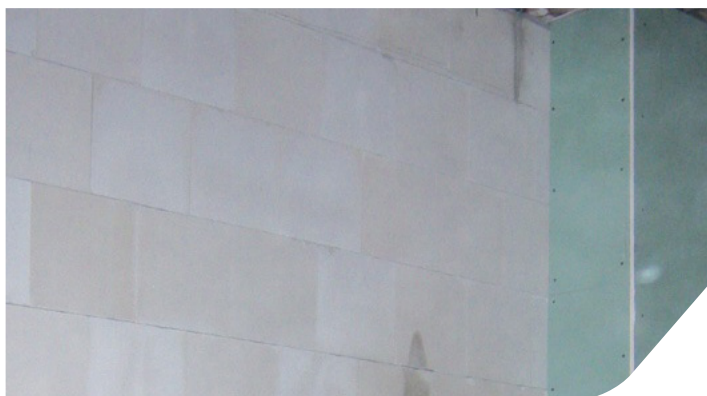
The substrate must be smooth, dry and sound.



Brick wall



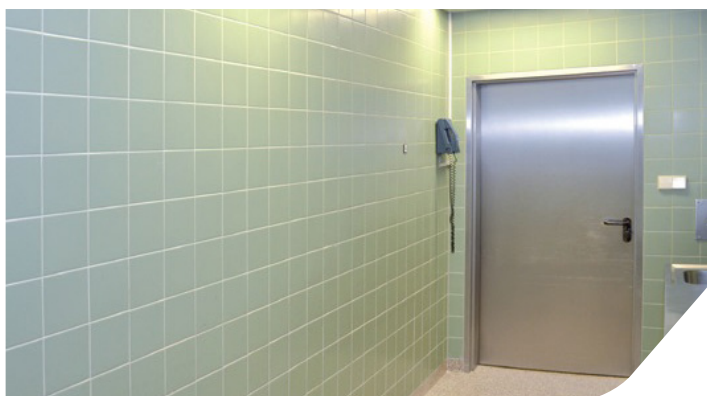
Sandstone



Gas concrete



Plasterboard



Old tiles

Substrate preparation, dust removal,
priming and leveling of unevenness,
if applicable



1

Adhesion-ready substrate



2

Smooth, sustainable wall



3

If necessary, prime sandy substrates

Mixing of the 2K-PUR adhesive



1

2K-PUR adhesive: hardener and binder component



2

Merging of hardener and binder



3

The components can be processed in the bucket



4

The components are mixed homogeneously with a stirrer

Application of the 2K-PUR adhesive



1

Application of the adhesive with a
notched trowel



2

Distribution of the adhesive to the edges



3

Uniform and full-surface distribution
of the adhesive



4

Ideally, the notches run vertically

Application and adjustment of the sheet, pushing and rubbing with pressure roller



1

Assembly of the first sheet
(if possible with a helper, due to the size)



2

Especially the first sheet must be aligned
very precisely



3

Please also note the accuracy
of fit in the corner



4

Uniform pressing with a roller

Application and adjustment of the next sheet, considering an expansion joint



1

Aligning the next sheet



2

Assembly of the next sheet



3

Please consider an expansion joint



4

Small plates help to ensure a uniform distance

Sealing of the expansion joint, also possible with profiles or by welding (not for TroBloc®)



1

Sealing of the joint with a suitable sealant



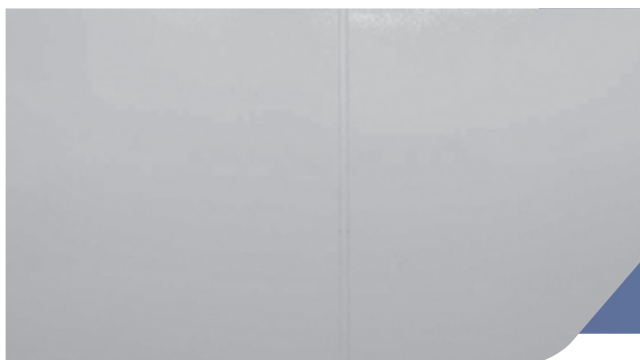
2

Most sealants can be smoothed with water



3

Smoothing of the joint with a wiper



4

Ready-made joint

Examples for inner and outer corners
(outer corners can be bent warm or
covered with profiles)



1

Internal corner with sealant



2

External corner, thermoformed



3

External corner made from sheet material

Cutting with a jigsaw and smoothing of the edges with a countersink tool



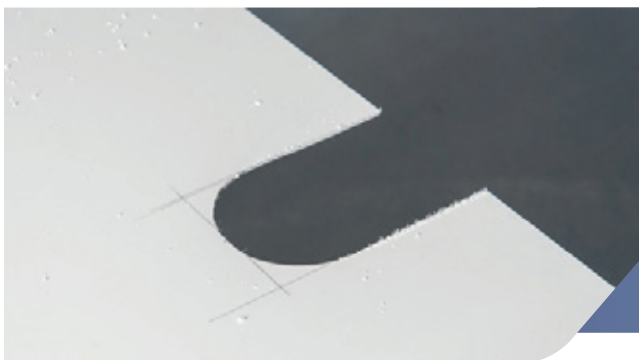
1

Clipping, e.g. for a pipe opening



2

Exact cut with a jigsaw



3

Curves can be easily made



4

Deburring of cutting edges

01922 492777
HELLO@PLASCLAD.CO.UK
WWW.PLASCLAD.CO.UK

UNITS 5 & 6
WILLENHALL LANE INDUSTRIAL ESTATE
BLOXWICH WALSALL WS3 2XN

PLAS
CLAD